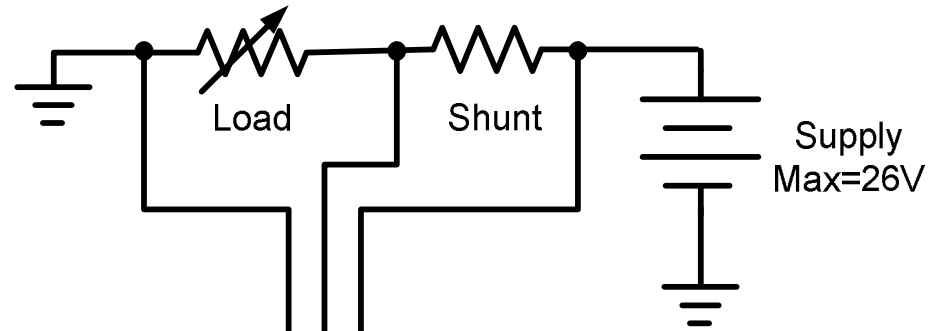


Initial Hardware Setup and Connections

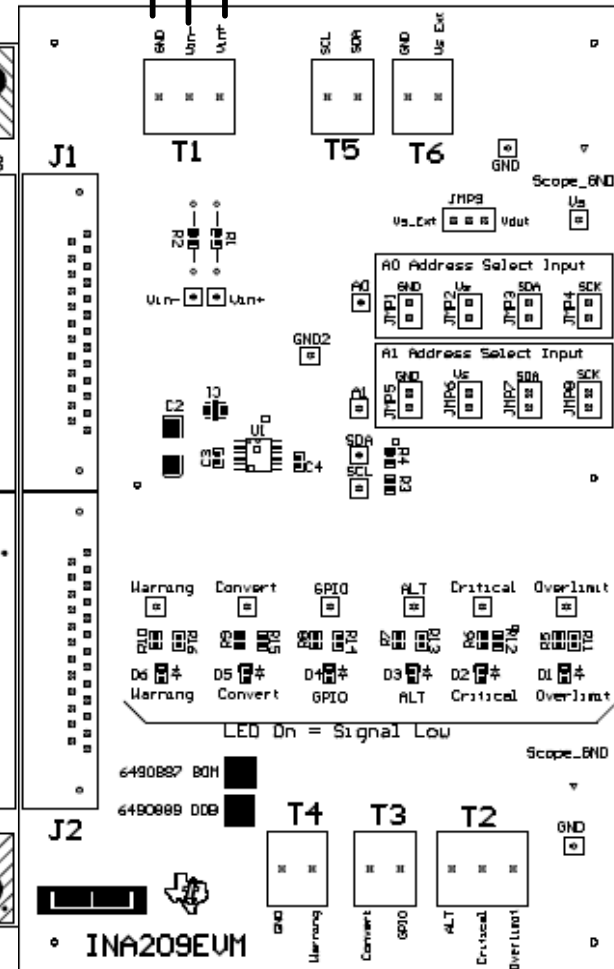
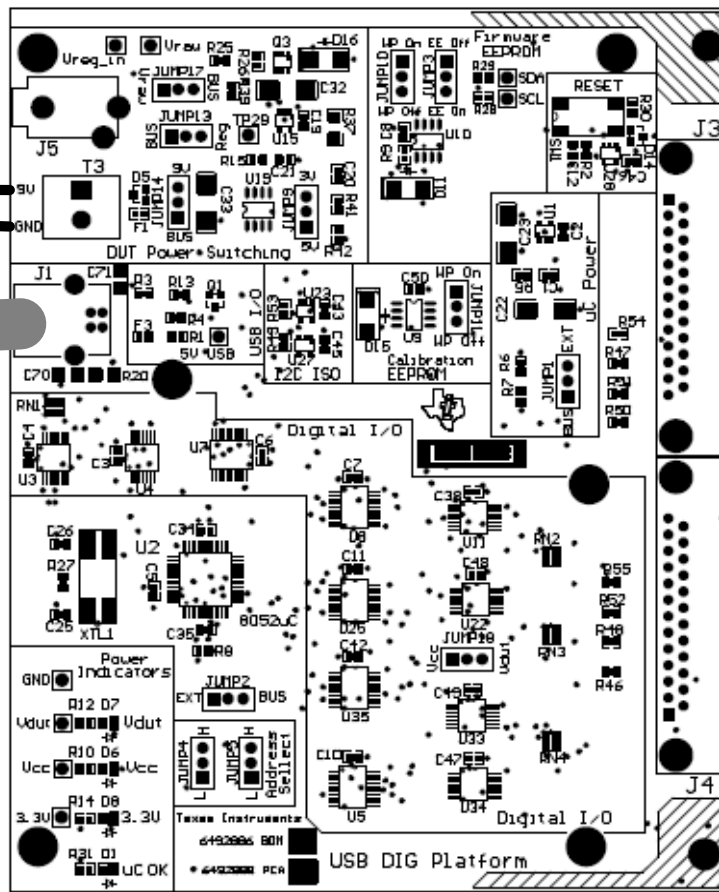
Required External Connections



DC Power for USB
DIG PLATFORM

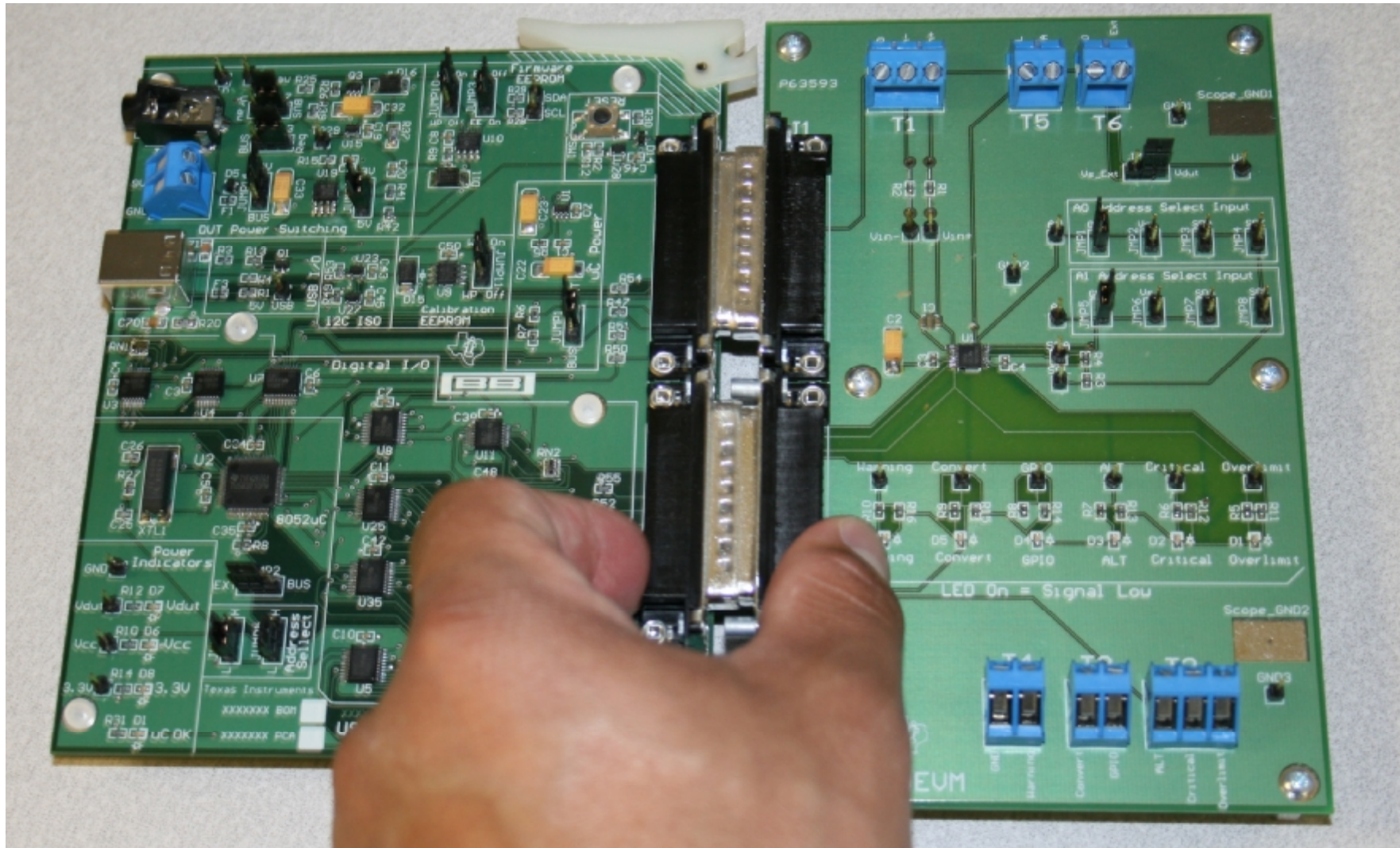
9V
GND

USB
Cable



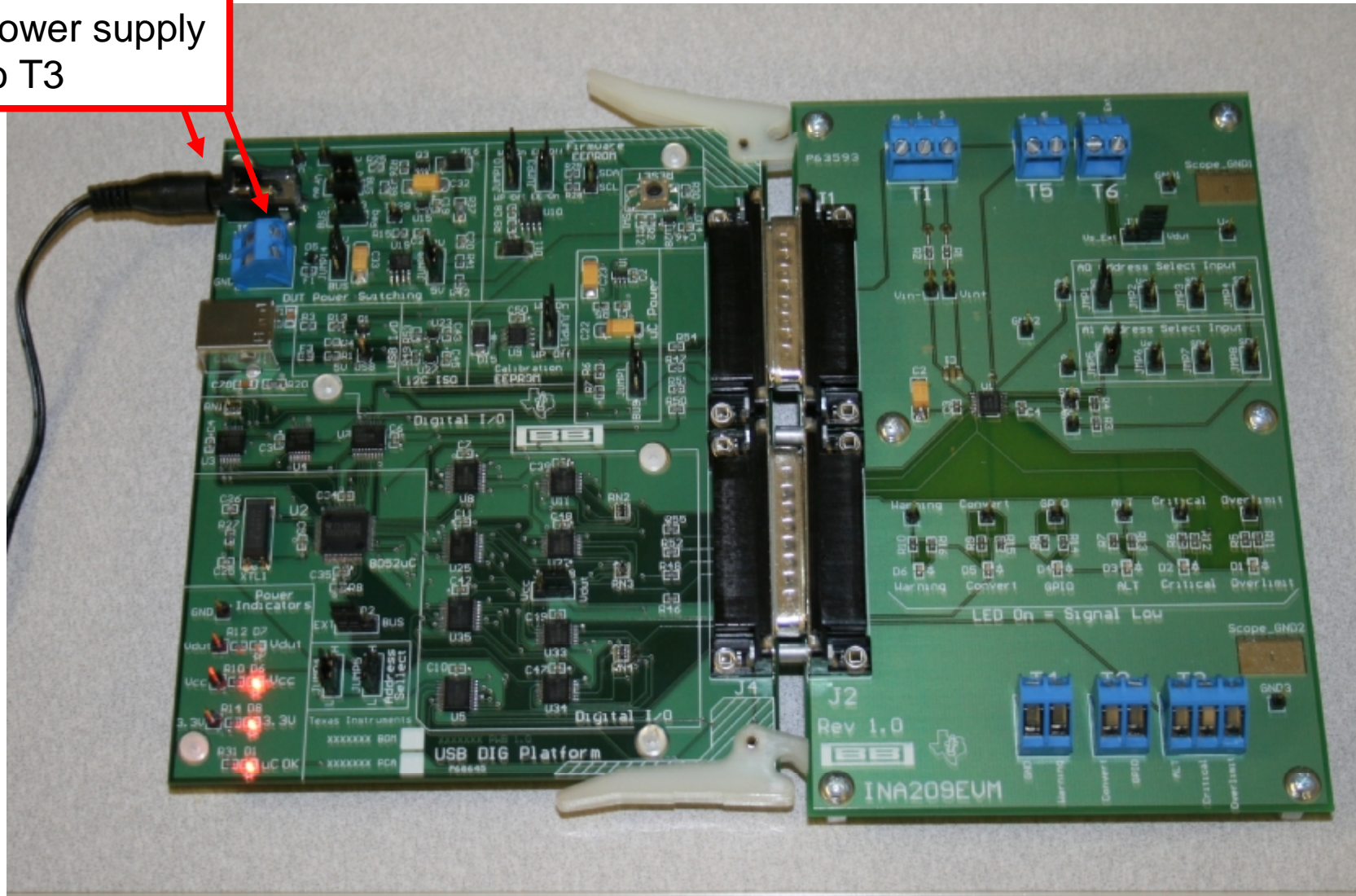
Connect USB DIG to INA209EVM

(Squeeze together on both sides of DSUB Connectors)



Connect Cables

Connect DC
Wall-wart to
J5 or 9V
power supply
to T3

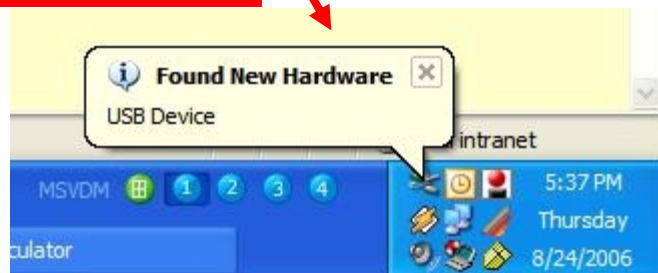
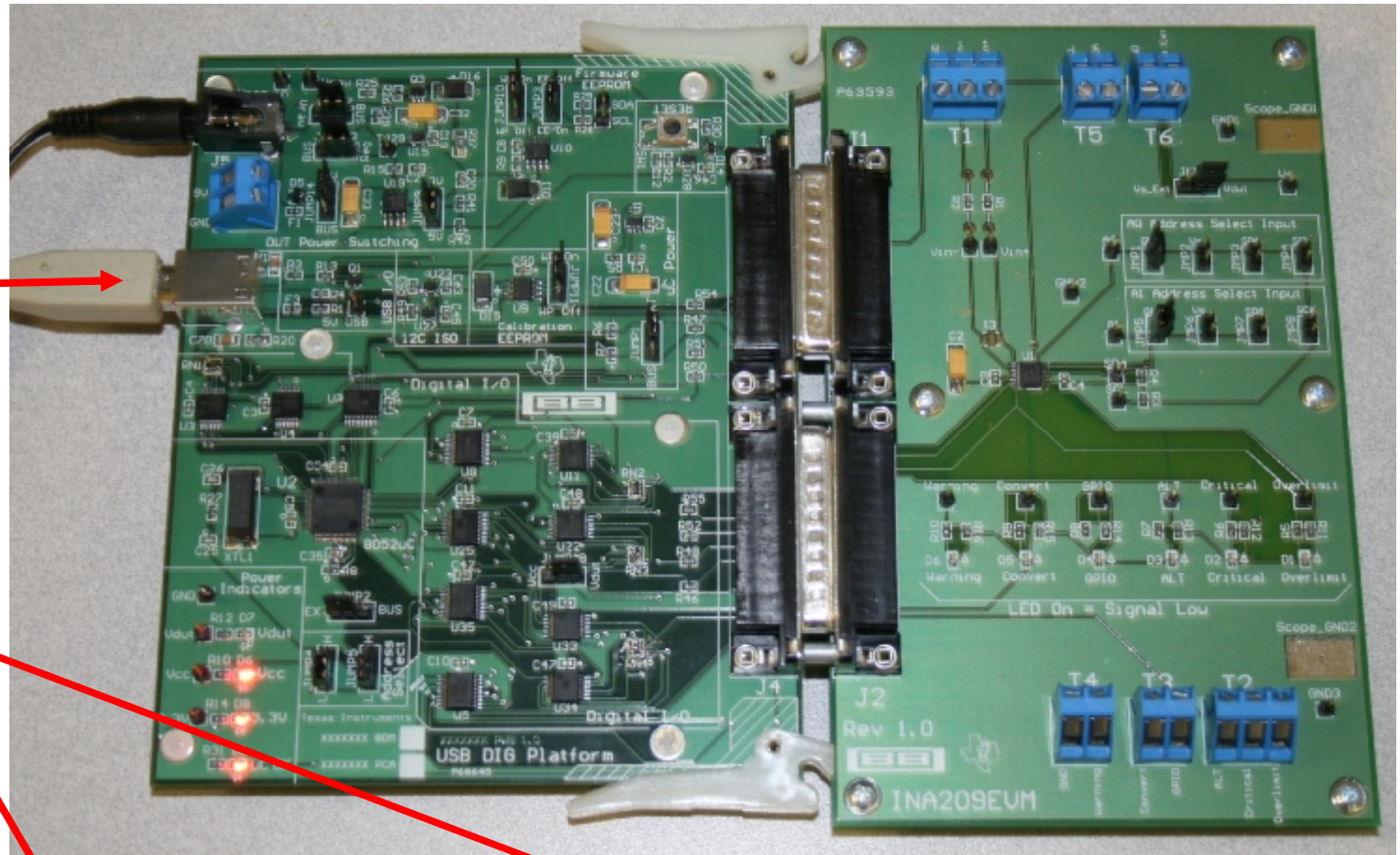


Connect Cables

Turn on the PC Sound.

Connect USB Connector J1 to PC USB Port.

The first time a USB DIG Board is plugged into your computer you may get a message (as shown below).





Connect
supply to the
shunt and
load resistors

